

# CLADDING INSTALLATION GUIDE



**WOOD.  
REFINED.  
REDEFINED.**



**TANTIMBER**

✉ [info@tantimber.com](mailto:info@tantimber.com) ☎ 0 216 232 2826

# CLADDING INSTALLATION GUIDE

## WORK SAFETY MEASURES

### Safety First.

Before starting to work, we remind you that all work safety precautions must be taken. The use of required safety equipment (helmet, gloves, goggles, protective footwear, waist belt, etc.) constitutes the technical dimension of work safety.

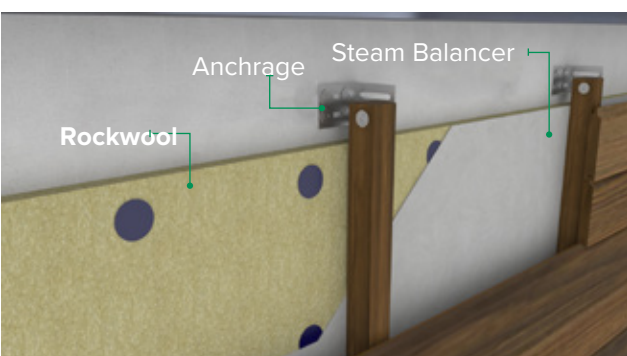
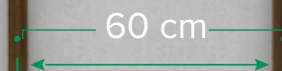
## BEFORE THE APPLICATION

- Before the application, facade of building needs to be prepared for the Tantimber Cladding installation. The following points should be observed during the preparation and installation.
- In case the building is formed of shear wall or cross laminated wooden panels, the underconstruction can be mounted directly onto the wall.
- If brick is preferred on the wall, it is absolutely necessary to apply at least 2 cm (1") thick plaster on the brick surface.
- If the wooden cladding is to be applied on the metal construction, primarily the wooden underconstruction should be laid in the opposite direction of the metal underconstruction and cladding should be carried out on wooden joists.
- In case of lighthweigth construction materials such as gas concrete, brick, etc.; wooden underconstruction should be mounted on the wall with chemical anchors.

## CLADDING CONSTRUCTION SYSTEM REGULATIONS

- Distance between Underconstructions:

Must be no more than 60 cm (2 ft)  
from center to center.



### In case of using rockwool for insulation

Steam balancer (tyvek or equivalent) must be used on the rockwool. Otherwise, due to the condensation that may occur behind the cladding, rockwool will get wet and lose its insulation properties.

# ■ CLADDING INSTALLATION GUIDE

## For the airflow behind the cladding

Between cladding profile and the supporting surface behind it (insulation material, wall, etc.), depending to the size of the covered wall; 2,5 - 4 cm (1"-1,5") space should be left.



## APPLICATION PHASE

It is recommended to apply 1 coat of wood preservative or primer before the installation, including the cut head parts of the wood. The first layer oiled products can be supplied from Tantimber. According to the application conditions of the wood preservative brand used, second or third layer of preservative must also be applied.

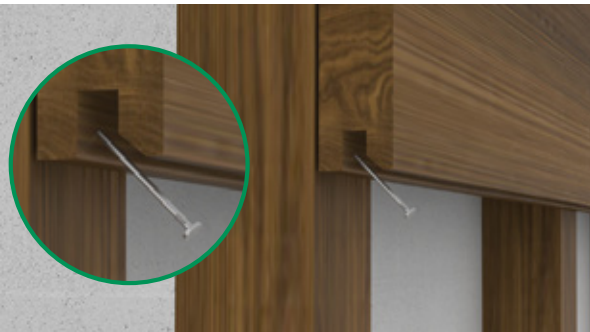


When the head parts of the cladding are cut off, it is absolutely necessary to apply preservative to the cut head parts.

In the horizontal tongue and groove cladding applications; profiles should be installed with tongue part facing upwards.



# CLADDING INSTALLATION GUIDE

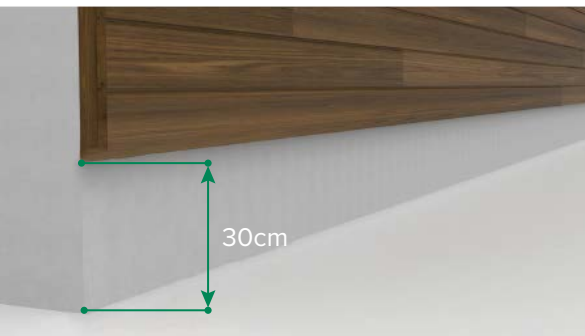


Stainless steel nails with air gun should be used in T&G cladding applications.

The nails should be driven through the groove part of the wood.

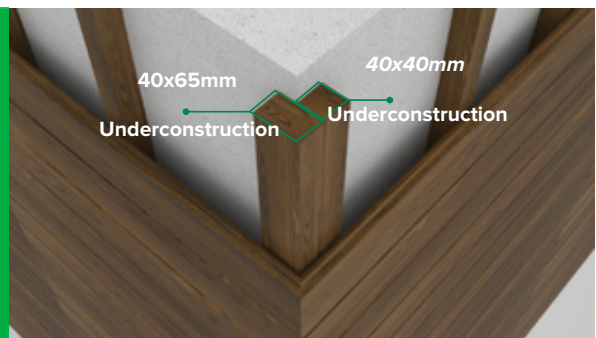
There must be at least 2 mm working space left in the back merging points of the T&G cladding.

It is recommended to apply cladding product to the underconstruction with polyurethane glue at the sections where the underconstructions are in contact with cladding product.



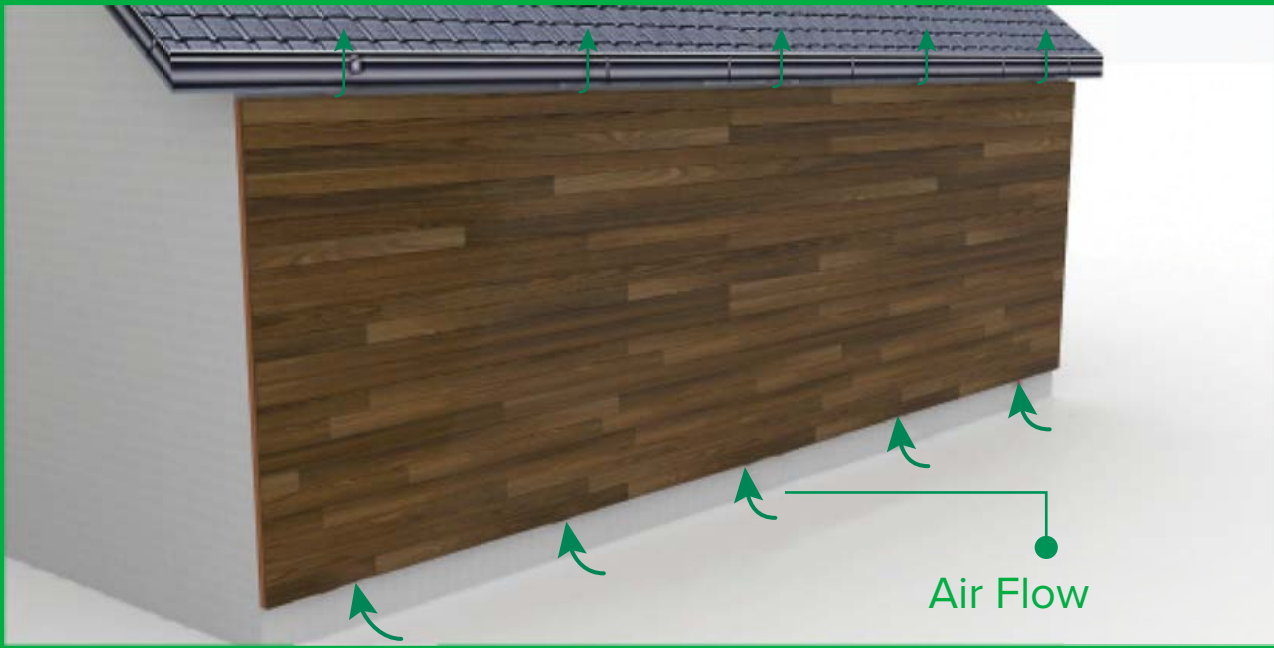
It is recommended to finish the cladding 30 cm (1 ft) above the ground. In this way, precautions will be taken against problems that may occur due to rainwater splashes or snow level height.

Underconstruction should be used on the both sides of the corner merging points in the back to support cladding's underside.



# ■ CLADDING INSTALLATION GUIDE

Water inflow behind the cladding must be prevented.



In order to allow air flow between the cladding and the wall, bottom and top ends should not be completely closed.



It is recommended to use the TanTak System hidden fastening for Rombus, Smooth and Zizza cladding profiles instead to prevent mount face screwings.